

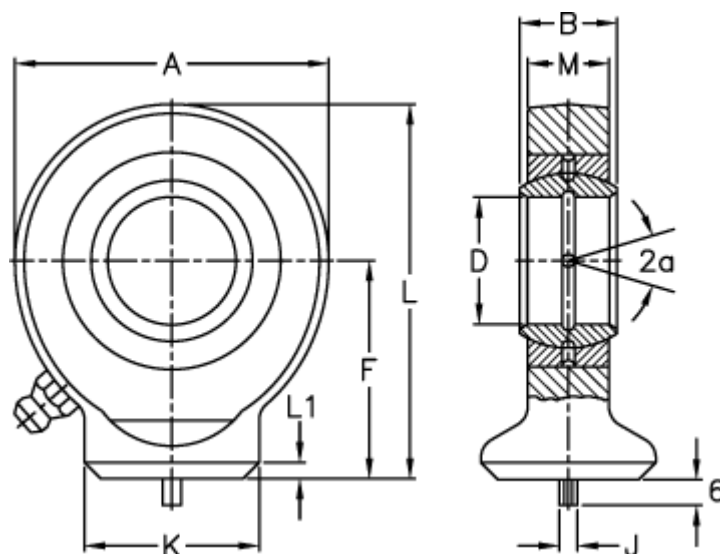
Data Sheet



Article number: 03555050

Description: Fluro hydraulic rod end FS 50C

Measures



A	= 112	L	= 144
a (degrees)	= 6	L1	= 6
B	= 35	M	= 30
D	= 50	Static load C0 (kN)	= 250
Dynamic load C (kN)	= 156	Weight	= 2650
F	= 88		
J	= 6		
K	= 62		